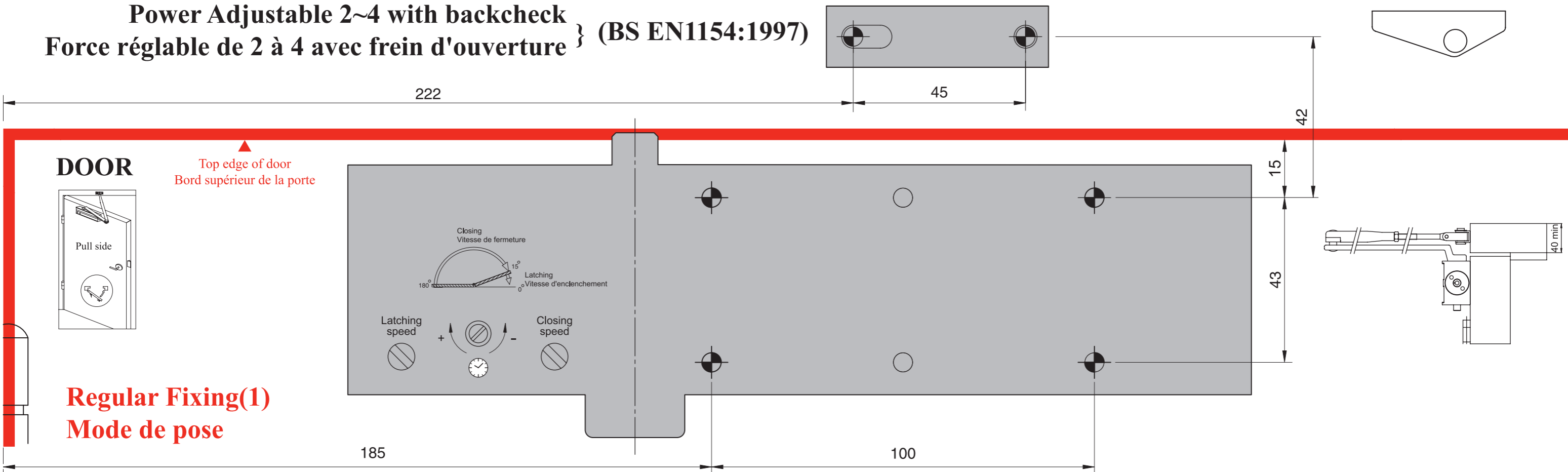
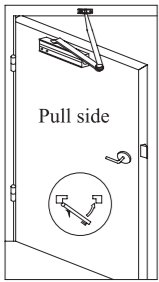


Power Adjustable 2~4 with backcheck Force réglable de 2 à 4 avec frein d'ouverture } (BS EN1154:1997)

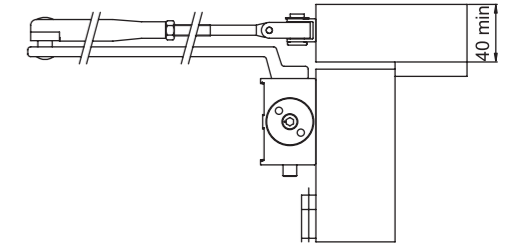
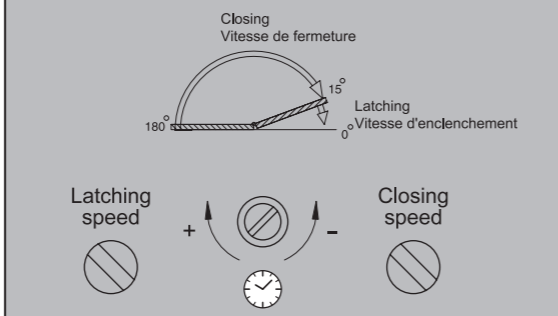


DOOR

Top edge of door
Bord supérieur de la porte



**Regular Fixing(1)
Mode de pose**

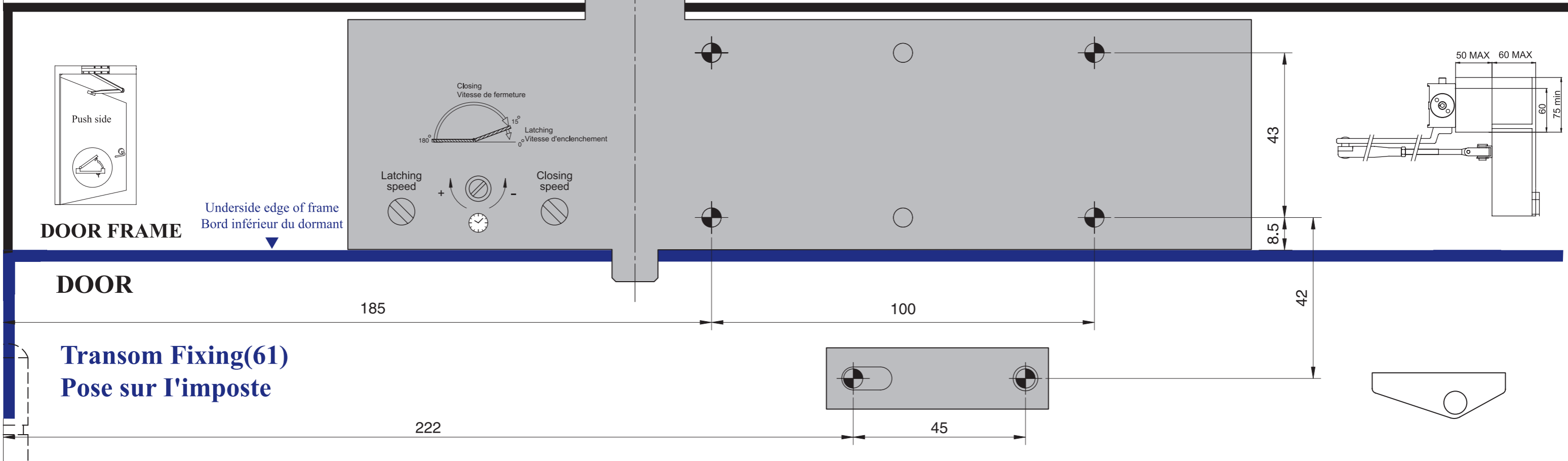


Fold Here

Power size	Max. Door width	Max. Door weight	Max. Door opening	Number of turns
EN2	850mm	40Kg	180°	8CCW
EN3	950mm	60Kg	180°	0
EN4	1100mm	80Kg	180°	7CW

Ø drilling	Ø de perçage
Ø2,5	Ø4,2
for wood door pour porte bois	for metal door pour porte métallique

⊕ Factory preset
Pré réglé en usine: Force 3 } CW:Clockwise CCW:Counterclockwise.

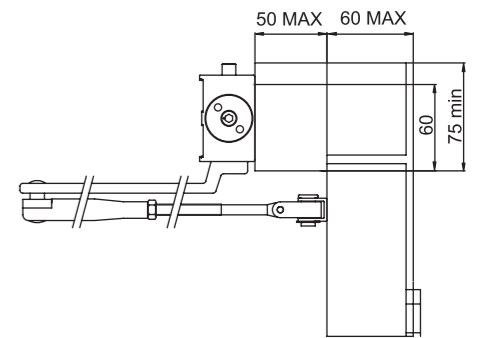
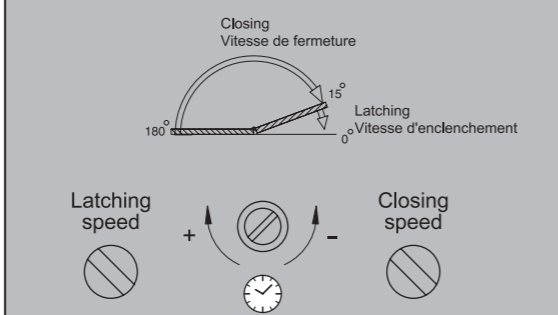


DOOR FRAME

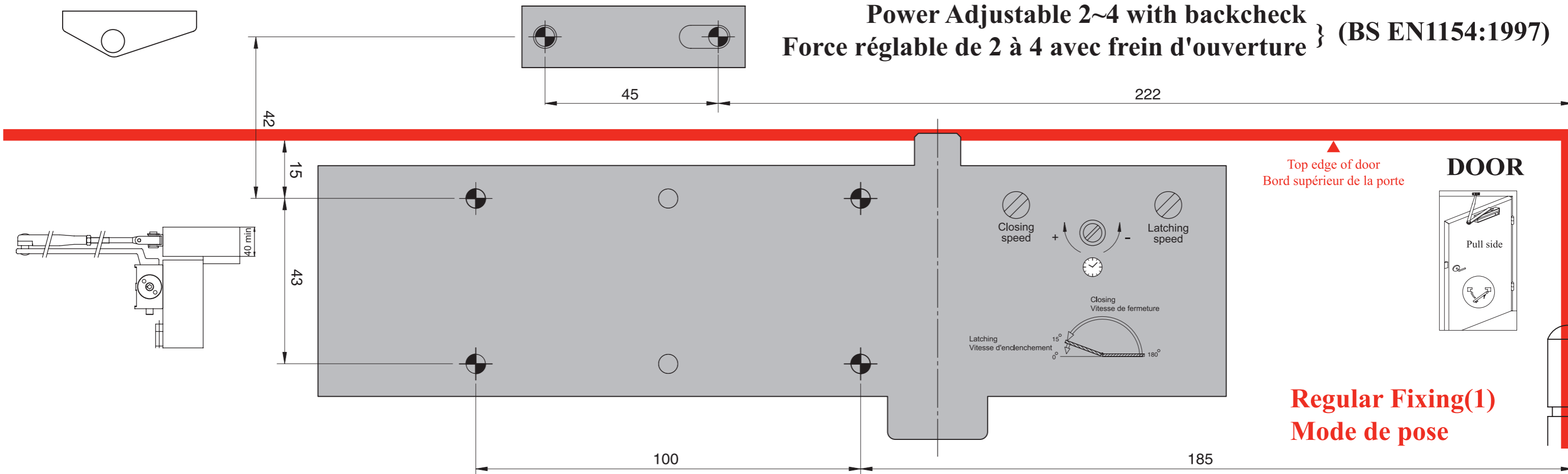
Underside edge of frame
Bord inférieur du dormant

DOOR

**Transom Fixing(61)
Pose sur l'imposte**




Power Adjustable 2~4 with backcheck
Force réglable de 2 à 4 avec frein d'ouverture } (BS EN1154:1997)



Top edge of door
Bord supérieur de la porte

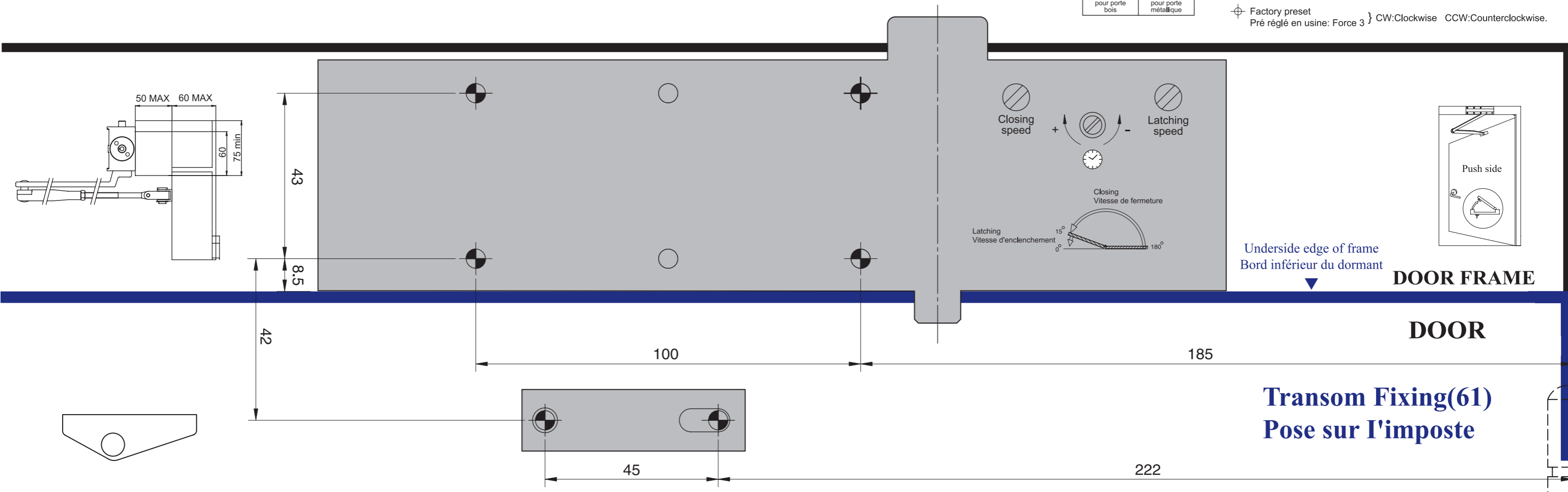
DOOR

Regular Fixing(1)
Mode de pose

Ø drilling	Ø de perçage
Ø 2,5	Ø 4,2
	M5x0,8
for wood door pour porte bois	for metal door pour porte métallique

Power size	Max. Door width	Max. Door weight	Max. Door opening	Number of turns
EN2	850mm	40Kg	180°	8CCW
EN3	950mm	60Kg	180°	0
EN4	1100mm	80Kg	180°	7CW

⊕ Factory preset
Pré réglé en usine: Force 3 } CW:Clockwise CCW:Counterclockwise.



Underside edge of frame
Bord inférieur du dormant

DOOR FRAME

DOOR

Transom Fixing(61)
Pose sur l'imposte

Fold Here